



JEREMY JENKINS
ESTATE AGENT

4 Fitzmaurice Place, Bradford-on-Avon, BA15 1EL.

Guide Price £185,000.

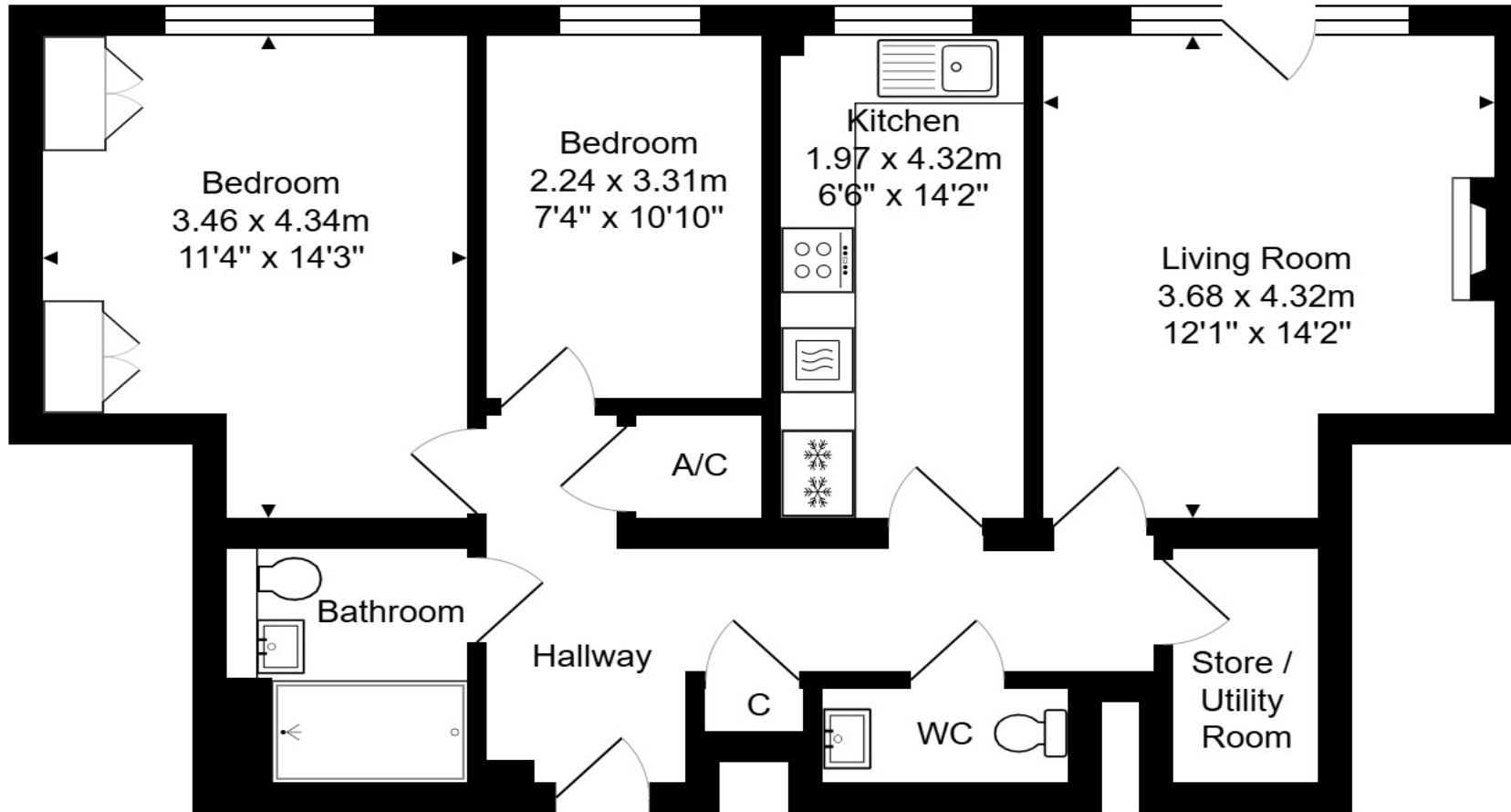
A WELL PRESENTED TWO BEDROOM, FIRST FLOOR RETIREMENT APARTMENT WITH LIFT ACCESS PLUS JULIET BALCONY AND A PLEASANT OUTLOOK IN THIS POPULAR RETIREMENT DEVELOPMENT. A SHORT WALK AWAY FROM THE TOWN CENTRE, AMENITIES & TRAIN STATION. AVAILABLE WITH NO ONWARD CHAIN.

The welcoming entrance hall leads to all the comfortable proportioned accommodation. The living room is light & airy and boasts a Juliet Balcony and a very pleasant outlook. The modern kitchen breakfast room has plenty of work surfaces & storage units, the apartment has a handy storeroom/utility space housing the washer and dryer. Both bedrooms are doubles; the second bedroom is currently used as a dining room/office. There is a modern shower room. Lastly, we find a separate cloak room. A rare find!

Ideal for downsizers! Fitzmaurice Place offers retirement properties in the centre of Bradford-on-Avon with a short walk to the market town amenities which include; - various shops and boutiques, many places to eat and drink, doctors and dentists, building society, swimming pool, river and canal walks, hairdressers, the Wiltshire Music Centre, churches and historical attractions, railway station and bus services. Fitzmaurice Place offers a resident's lounge, guest suite, communal gardens and visitor car parking. There is the bonus of a bus stop just on the doorstep! **Note:** Leasehold property. No onward chain.

- First floor flat with Juliet Balcony & lift
- Two double bedrooms, one is used as a dining room
- Shower room plus extra W.C.
- Modern kitchen/breakfast room
- Useful storeroom used as a utility & water softener
- Smartly presented & lovely & light





Total Area: 68.4 m² ... 737 ft²

Whilst every attempt has been made to ensure the accuracy of the floorplan contained here, measurements of doors, windows, rooms and any other items are approximate and no responsibility is taken for any error, omission or mis-statement.
 This plan is purely for illustrative purposes only and should be used as such by any prospective purchaser.
www.epcassessments.co.uk

